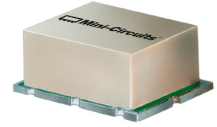


# High IP3 Frequency Mixer

# SYM-25DHW+ SYM-25DHW

Level 17 (LO Power +17 dBm) 80 to 2500 MHz



CASE STYLE: TTT167

## Maximum Ratings

Operating Temperature	-40°C to 85°C
Storage Temperature	-55°C to 100°C
RF Power	200mW
IF Current	40mA
Permanent damage may occur if any of these limits are exceeded.	

## Pin Connections

LO	2
RF	1
IF	3
GROUND	4,5,6

## Features

- wide bandwidth, 80 to 2500 MHz
- low conversion loss, 6.4 dB typ.
- high IP3, 30 dBm typ.
- good L-R isolation, 37 dB typ.; & L-I isolation, 36 dB typ.

## Applications

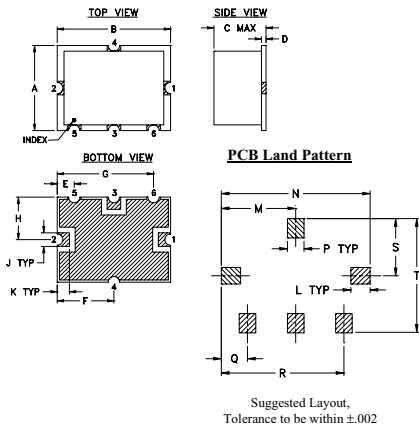
- cellular
- PCN
- ISM/GPS
- satellite distribution

**+RoHS Compliant**  
The +Suffix identifies RoHS Compliance. See our web site for RoHS Compliance methodologies and qualifications

**Available Tape and Reel at no extra cost**

Reel Size	Devices/Reel
7"	10, 20, 50, 100, 200
13"	500

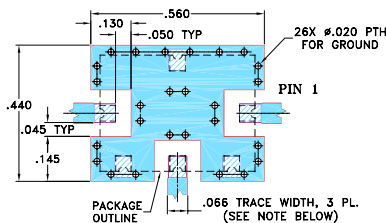
## Outline Drawing



## Outline Dimensions (inch/mm)

A	B	C	D	E	F	G	H	J	K
.38	.50	.23	.020	.075	.250	.425	.187	.050	.050
9.65	12.70	5.84	0.51	1.91	6.35	10.80	4.75	1.27	1.27
L	M	N	P	Q	R	S	T	wt.	
.070	.270	.540	.060	.095	.445	.208	.415	grams	
1.78	6.86	13.72	1.52	2.41	11.30	5.28	10.54	0.8	

## Demo Board MCL P/N: TB-12 Suggested PCB Layout (PL-079)



## Electrical Specifications

FREQUENCY (MHz)	CONVERSION LOSS* (dB)	LO-RF ISOLATION (dB)			LO-IF ISOLATION (dB)			IP3 at center band (dBm)						
		L	M	U	L	M	U							
80-2500	DC-1000*	46	29	37	25	35	20	38	26	33	24	36	20	30

1 dB COMP: +14 dBm typ.

\*Conversion loss increases up to 6 dB higher as IF frequency decreases from 5MHz to DC.

L = low range [ $f_l$  to  $10 f_l$ ]

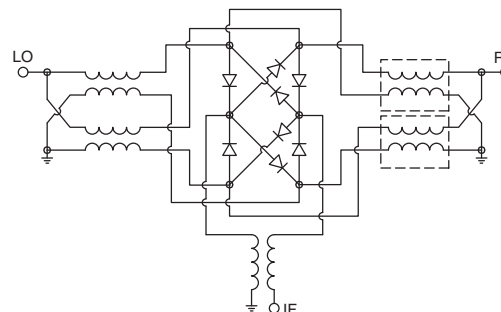
M = mid range [ $10 f_l$  to  $f_u/2$ ]

U = upper range [ $f_u/2$  to  $f_u$ ]

## Typical Performance Data

Frequency (MHz)	Conversion Loss (dB)	Isolation L-R (dB)	Isolation L-I (dB)	VSWR RF Port (:1)	VSWR LO Port (:1)	
						RF
80.10	150.10	6.19	62.25	39.40	1.17	1.51
100.10	170.10	6.03	66.01	39.41	1.17	1.50
200.10	270.10	6.10	72.25	39.13	1.19	1.50
300.10	370.10	6.10	64.46	39.58	1.21	1.51
400.10	470.10	6.06	55.78	40.34	1.27	1.49
500.10	570.10	6.10	53.22	40.62	1.35	1.48
653.04	723.04	6.18	53.66	41.52	1.52	1.36
736.86	806.86	6.23	55.60	41.42	1.62	1.28
820.69	890.69	6.21	51.51	39.18	1.75	1.25
904.51	974.51	6.22	50.02	37.99	1.90	1.23
1000.10	1070.10	6.18	49.68	37.39	2.07	1.21
1239.81	1309.81	6.49	43.82	35.23	2.48	1.10
1407.45	1393.63	6.66	42.30	34.95	2.58	1.07
1500.10	1477.45	6.59	41.52	35.19	2.68	1.06
1742.75	1570.10	6.78	40.80	36.78	2.88	1.10
1826.57	1812.75	7.01	48.77	43.06	3.13	1.26
2000.10	1896.57	7.22	52.54	46.82	2.90	1.32
2329.51	2231.86	7.68	44.22	40.04	2.26	1.56
2413.34	2399.51	7.54	39.54	34.12	1.97	1.70
2500.10	2483.34	7.55	38.42	32.57	1.86	1.74

## Electrical Schematic



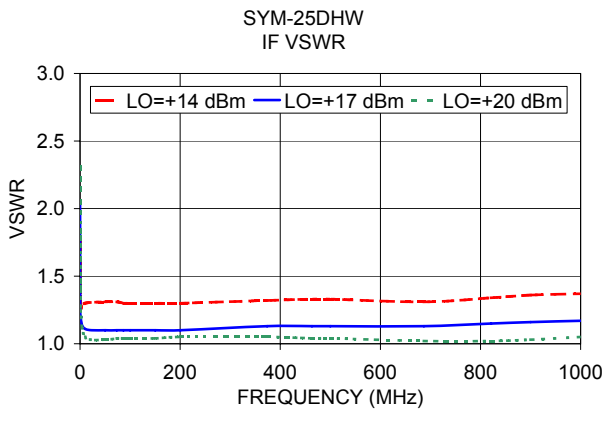
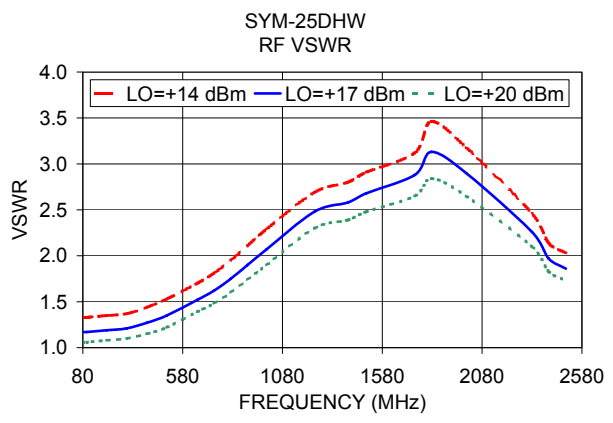
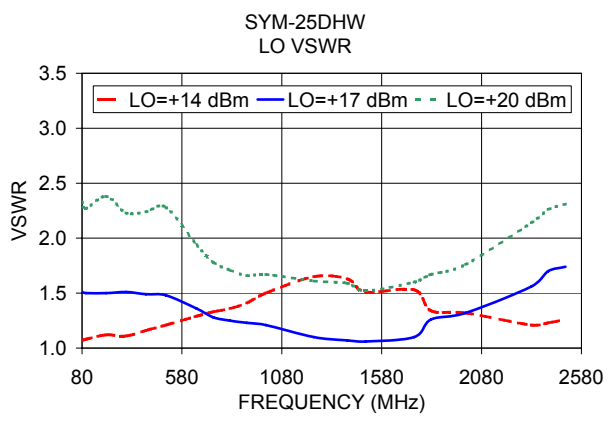
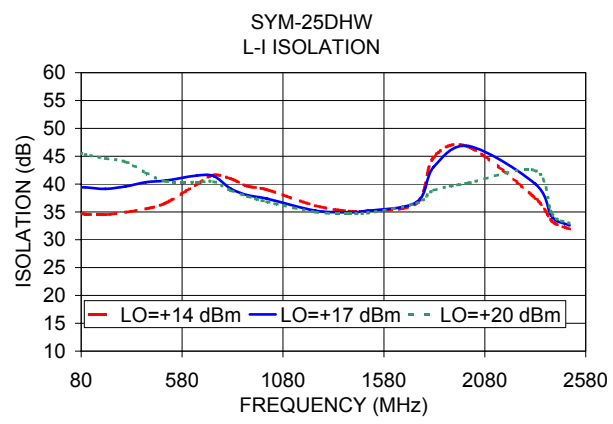
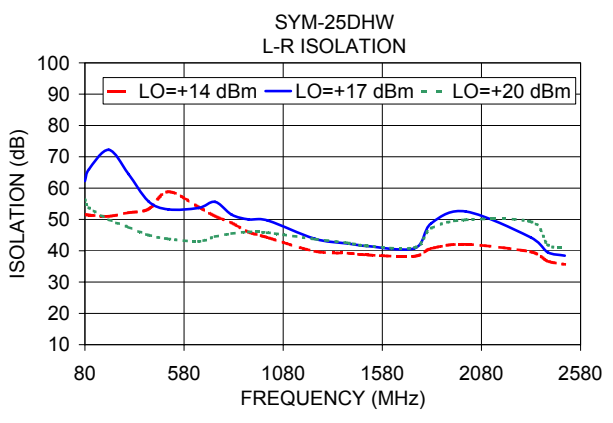
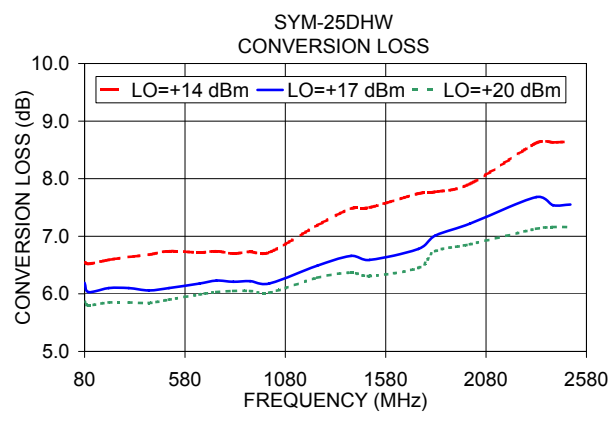
Notes  
A. Performance and quality attributes and conditions not expressly stated in this specification document are intended to be excluded and do not form a part of this specification document.  
B. Electrical specifications and performance data contained in this specification document are based on Mini-Circuit's applicable established test performance criteria and measurement instructions.  
C. The parts covered by this specification document are subject to Mini-Circuit's standard limited warranty and terms and conditions (collectively, "Standard Terms"); Purchasers of this part are entitled to the rights and benefits contained therein. For a full statement of the Standard Terms and the exclusive rights and remedies thereunder, please visit Mini-Circuit's website at [www.minicircuits.com/MCLStore/terms.jsp](http://www.minicircuits.com/MCLStore/terms.jsp)



[www.minicircuits.com](http://www.minicircuits.com) P.O. Box 350166, Brooklyn, NY 11235-0003 (718) 934-4500 sales@minicircuits.com

REV. F  
M151107  
SYM-25DHW  
EDR-5073  
DJ/TD/AM  
151006  
Page 1 of 2

## Performance Charts



**Notes**

- A. Performance and quality attributes and conditions not expressly stated in this specification document are intended to be excluded and do not form a part of this specification document.
- B. Electrical specifications and performance data contained in this specification document are based on Mini-Circuit's applicable established test performance criteria and measurement instructions.
- C. The parts covered by this specification document are subject to Mini-Circuits standard limited warranty and terms and conditions (collectively, "Standard Terms"); Purchasers of this part are entitled to the rights and benefits contained therein. For a full statement of the Standard Terms and the exclusive rights and remedies thereunder, please visit Mini-Circuits' website at [www.minicircuits.com/MCLStore/terms.jsp](http://www.minicircuits.com/MCLStore/terms.jsp)

